

Safety Briefing

GRAND PLAZA BALLROOM

Emergency Procedures In case of Fire & Earthquake

A. Instructions In Case of Fire:

(if the fire bell starts to ring continuously, please do not panic and follow these instructions immediately)

1. Remain Calm.
2. Leave the function room in an orderly manner and proceed to your nearest emergency exit doors.
3. Proceed at the designated assembly area.
4. Hotel staff will assist you during the evacuation.

B. Instructions In Case of Earthquake:

What to do during an earthquake?

1. If you are inside the function room, stay indoors and remain calm.
2. Down on the floor until earthquake is over.

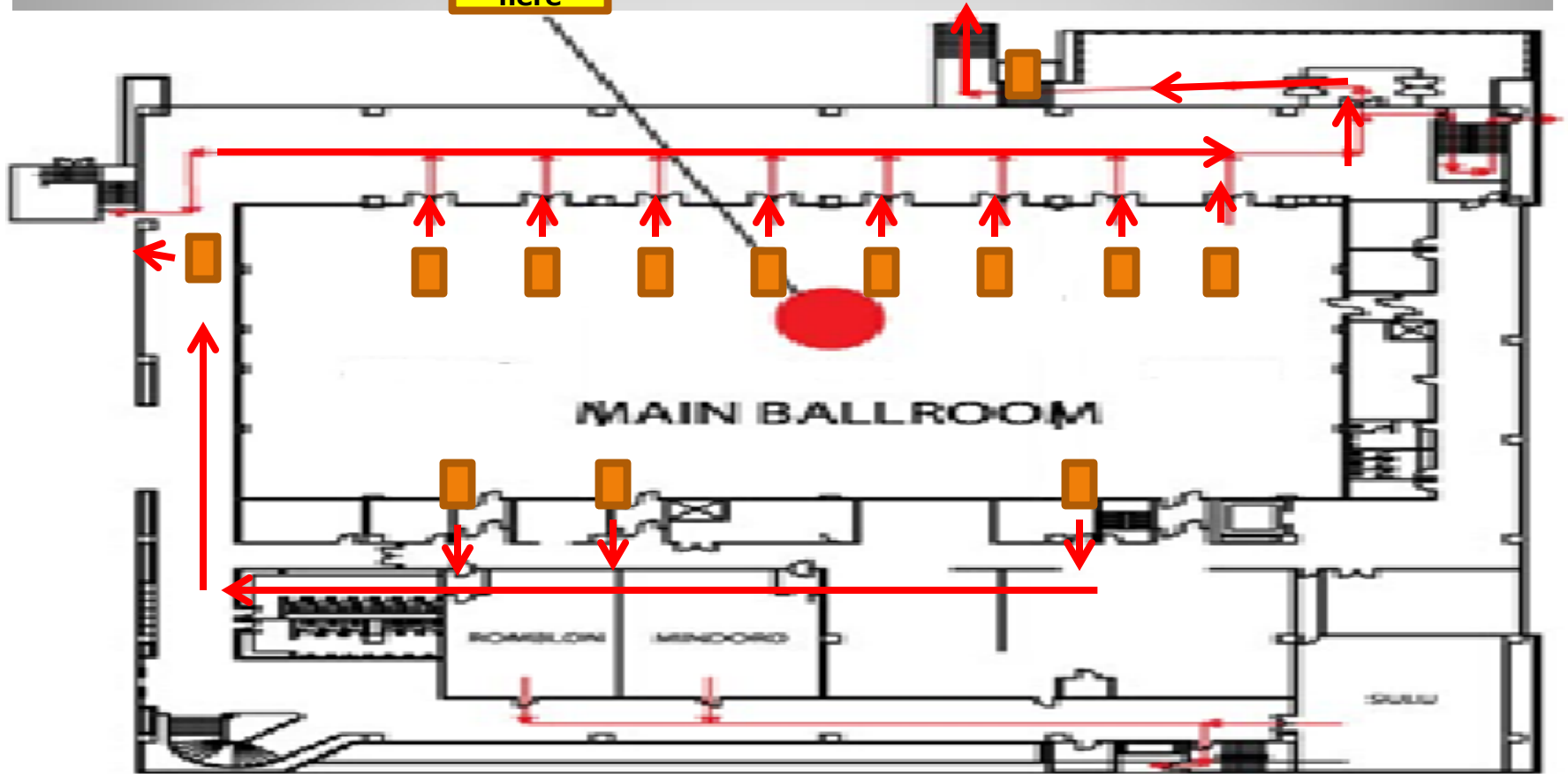
What to do after the earthquake?

1. In case evacuation is required, please proceed to the nearest emergency exit.
2. Hotel staff will assist you to the designated evacuation area.

C. In case of medical emergency the hotel has a medical clinic open 24 hours to assist you.

EMERGENCY EVACUATION PLAN GRAND PLAZA BALLROOM

You are here



LEGEND :



Emergency Exit

Swimming Pool areas

YOU ARE HERE

MAIN BALLROOM

ROMELON

MINDORD

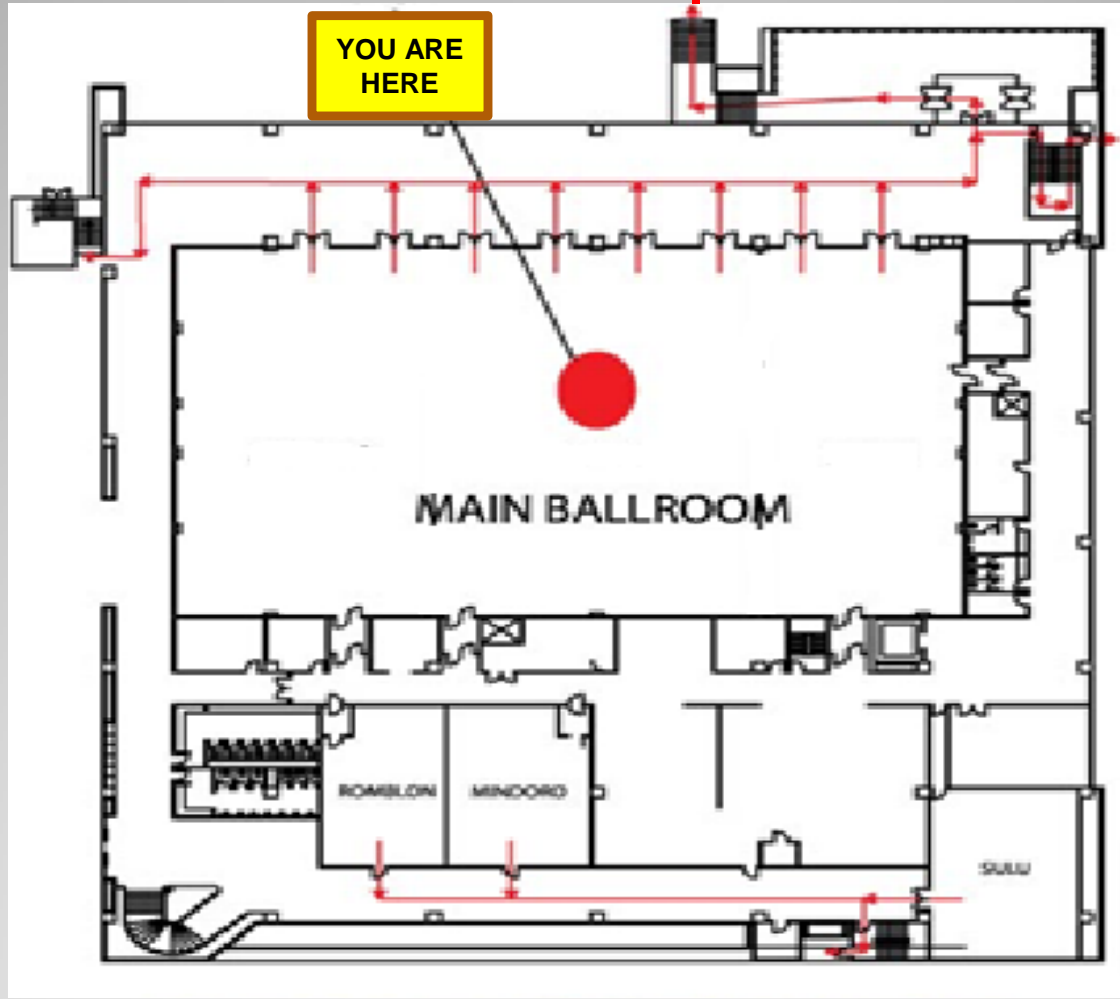
SULU

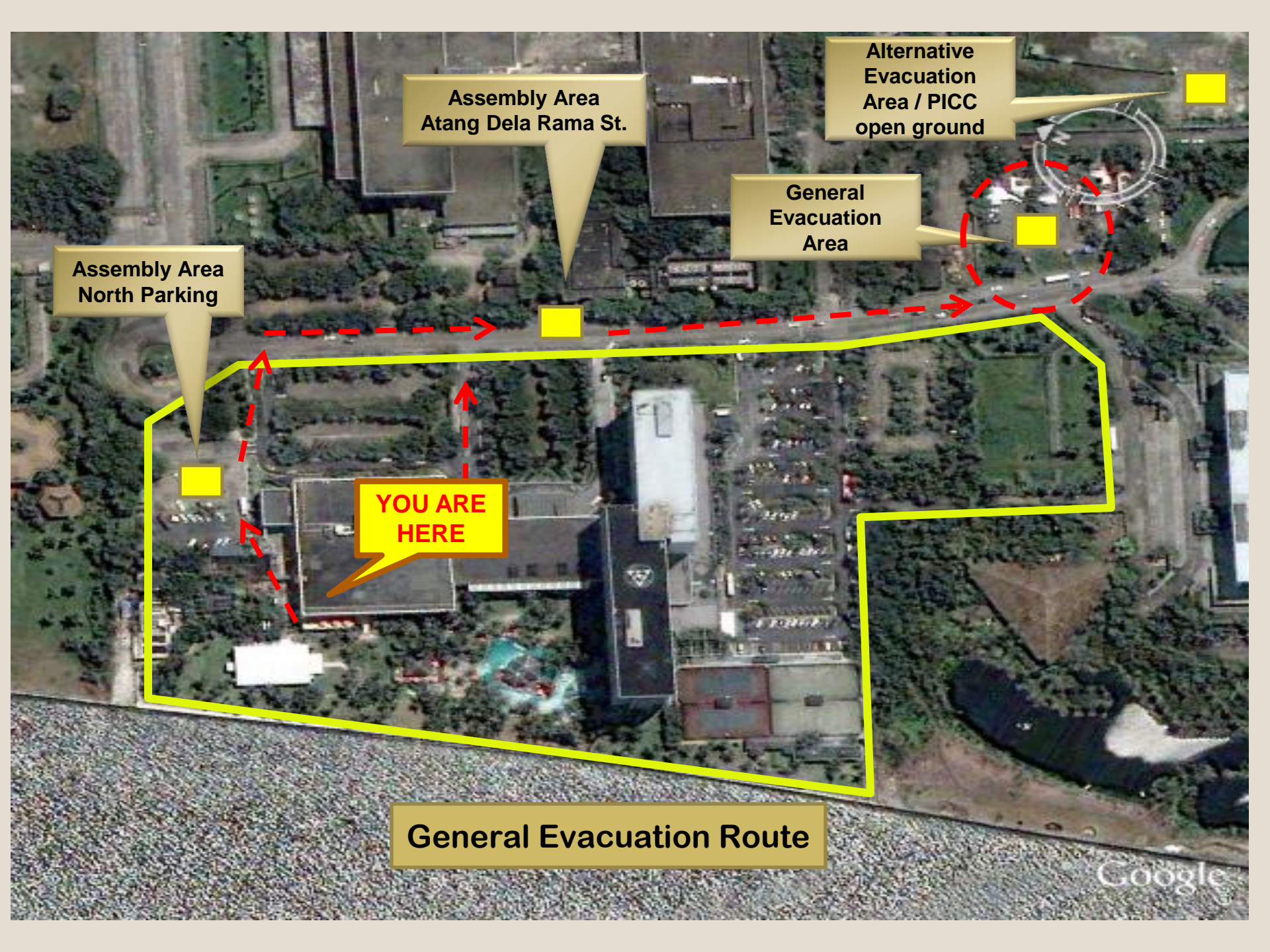
South Parking

Basketball Court / General Evacuation Areas

Assembly Area / North Parking

Assembly Area Atang Dela Rama St.





Assembly Area
Atang Dela Rama St.

Alternative
Evacuation
Area / PICC
open ground

General
Evacuation
Area

Assembly Area
North Parking

**YOU ARE
HERE**

General Evacuation Route

Emergency Contact number

- 1300 – SECURITY OFFICE**
- 1505 – HOTEL CLINIC**
- 7777 – TEL OPERATOR HOTLINE**
- 1080 – SECURITY HOTLINE**
- 7122 – HOTEL PHARMACY**
- “0” – TELEPHONE OPERATOR**

Nearest Hospital

San Juan De Dios Hospital

Ospital ng Maynila

End of Slides!